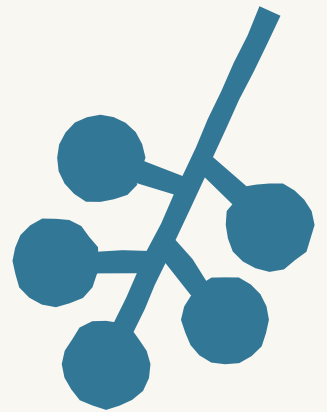
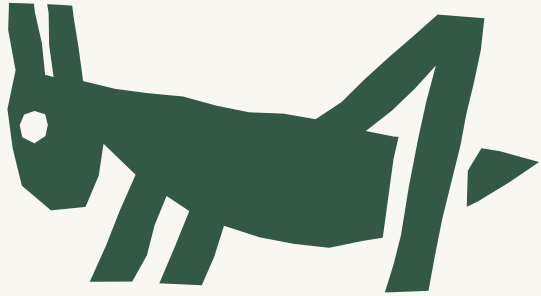


Snapshot Report 2024/2025



National
Education
Nature Park



About the National Education Nature Park

The National Education Nature Park is a free education programme in England that puts climate and nature at the heart of education.

It's all about empowering the next generation to understand, care for, and improve the natural world while making their school, nursery or college site a better place for both people and wildlife.

Through a five-step process supported by curriculum-linked resources and activities, the programme connects young people with nature as they transform their sites from 'grey to green'. They are developing nature-rich spaces in previously concrete and nature-depleted areas, through creating new habitats such as ponds, living walls and wildflower meadows. Together, children and young people are harnessing the education estate – an area roughly twice the size of Birmingham – to help nature recover and collecting data that contributes to global biodiversity research.

Quality-assured, curriculum-linked resources help educators to bring climate and nature across subjects and key stages, nurturing a range of green and digital skills that prepare children and young people for a rapidly changing world.

The programme has been commissioned by the Department for Education and developed and delivered by a partnership led by the Natural History Museum working with the Royal Horticultural Society and additional partners, with geospatial expertise provided by Esri UK. It launched in October 2023 and so far has seen more than 7,500 schools, colleges and nurseries get involved so far.



Nature Park in numbers



More than
7,500
schools, nurseries and
colleges registered



Four times
more nurseries are now taking part
compared to this time last year



More than
1 in 4
primary and secondary
schools registered



More than
13 million
square metres of
habitat mapped



Over
£12 million
in grants awarded to over
1,250 schools and nurseries



More than
1,100
schools, nurseries and
colleges working on their
habitat maps

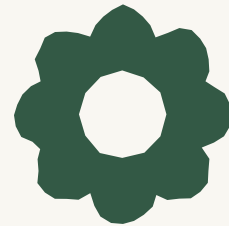
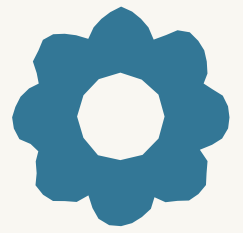
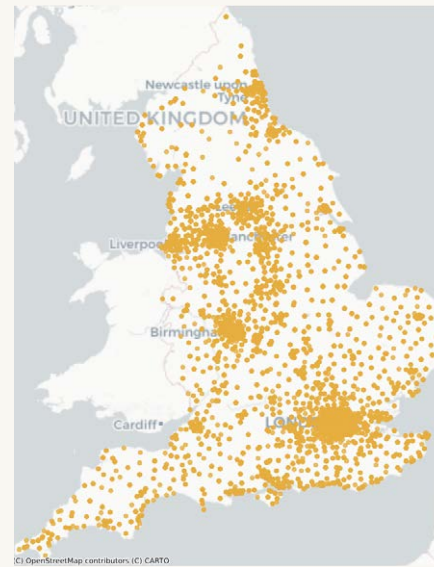
Numbers accurate as of September 2025

Education setting registrations

2023/24

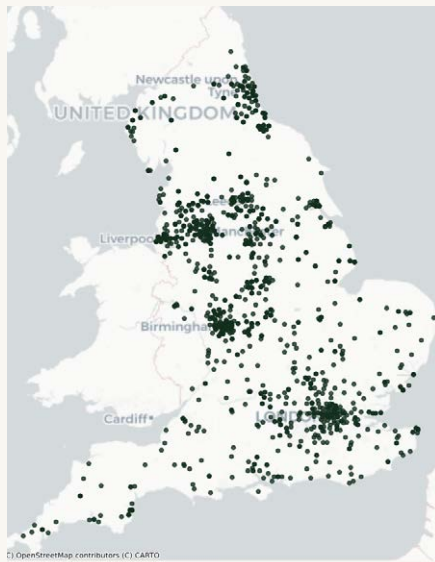


2024/25

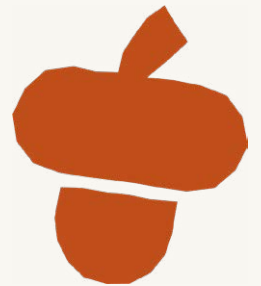
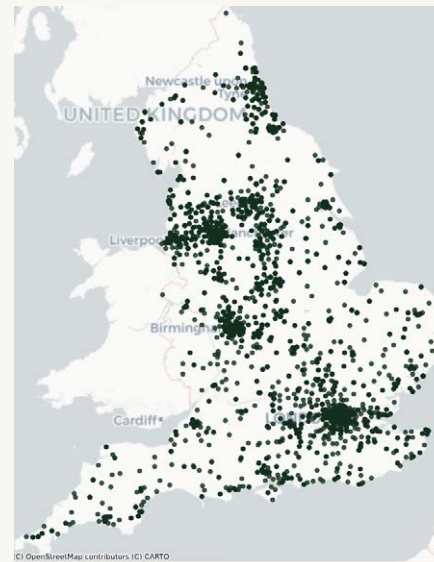


Site boundaries

2023/24



2024/25

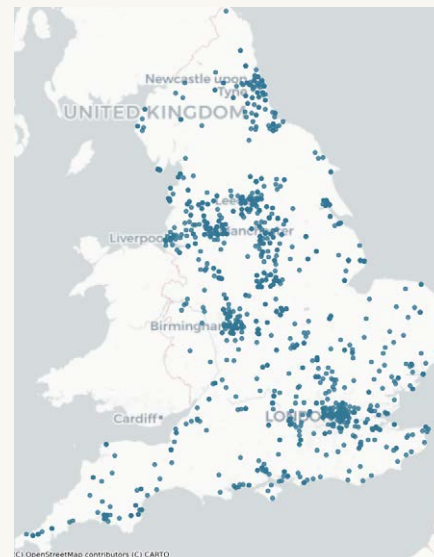


Habitat mapping

2023/24



2024/25



What's next?

We've got an action-packed year ahead! Here are some of the areas we are most excited about.

- **A whole-school approach:** the Nature Park is designed to involve everyone within a school, nursery or college community. This year, we will support settings to embed a culture of putting nature at the heart of all school life.
- **Supporting Climate Action Plans (CAPs):** we'll work closely with our sister programmes to support the creation, development and implementation of CAPs.
- **Research into nature and wellbeing:** building on evidence that nature connection supports wellbeing, we will begin our own research into how the Nature Park is impacting students and staff.
- **Expanding the Nature Park for Early Years Foundation Stage (EYFS):** we've adapted the programme for the youngest learners so everyone can get involved from the start of their educational journey.

- **Development work for Specialist educational needs and disabilities (SEND):** we'll continue to consult with specialists in SEND settings to ensure the programme meets their needs.
- **Further digital tool improvements:** habitat mapping tools will continue; we'll launch a grasslands survey deepen understanding of habitat biodiversity, and release a tool that makes it easier for educators to access site data for lessons.
- **More curriculum-linked resources coming online:** upcoming resources include Maths, Computer Science and arts-based subjects, aligned with the outcomes of the government's curriculum review.
- **Continued collaboration:** we'll keep working with Climate Adapted Pathways for Education (CAPE), our Professional Development affiliate, to equip school and subject leaders with the knowledge and hands-on skills to integrate the Nature Park into teaching and learning, ensuring school grounds improve for biodiversity, young people strengthen their connection to nature, and pupils understand climate impacts in their local environment.

“Teaching climate topics across subjects has given me more confidence to discuss environmental issues with my class”

– Teacher, North West





National Education Nature Park

Led by



With



Working with



Commissioned by



Partners



Get involved by visiting
www.educationnaturepark.org.uk